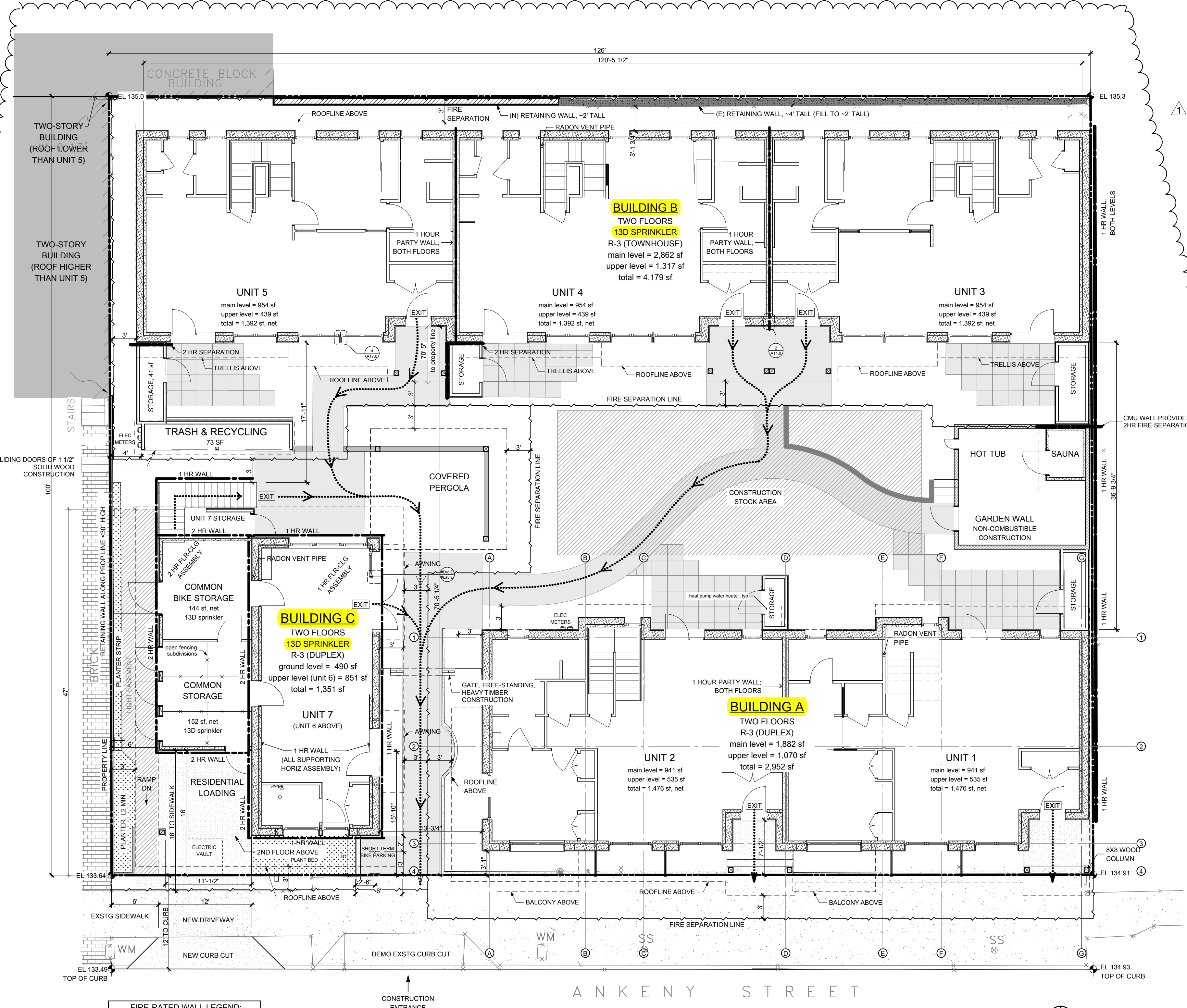
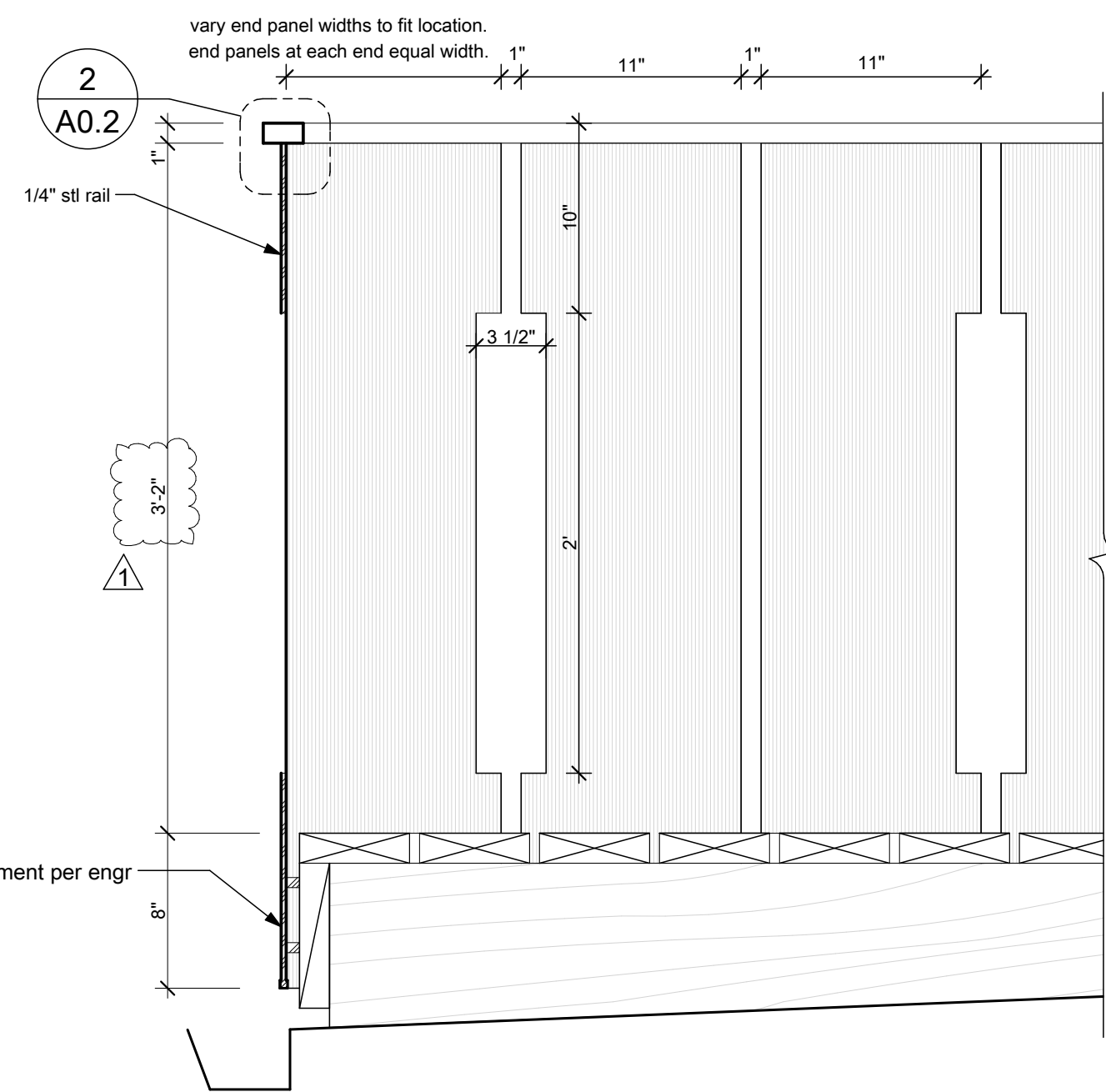
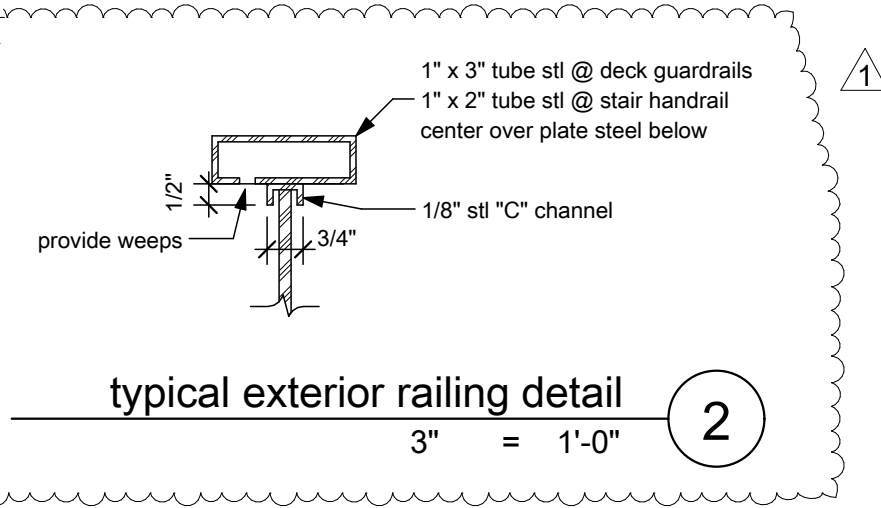


notes:

1. BUILDING LOCATIONS ON THIS DRAWING ARE APPROXIMATE (+/- 3"). SEE A-0.3 FOUNDATION LAYOUT PLAN FOR EXACT LOCATIONS.
2. SPRINKLER SYSTEM TO BE DEFERRED SUBMITTAL

notes regarding fire & sound-rated assemblies:

1. All penetrations into fire or sound rated partitions or floor-ceiling assemblies shall be sealed, lined, or insulated with an approved permanent resilient sealant.
2. All rigid conduits, ducts, plumbing pipes, and appliance vents located in sound rated assemblies shall be isolated from the building construction by means of resilient sleeves, mounts, or a minimum 1/4" thick approved resilient material.
3. An approved permanent and resilient acoustical sealant shall be provided along the joint between separation walls and all intersecting walls, floors, and ceilings.
4. Metal ventilating and conditioned air ducts located in sound rated assemblies shall be lined (Exception: Ducts serving only exit ways, kitchen cooking facilities, and bathrooms need not be lined).
5. Mineral fiber or cellulose insulation shall be installed in joist spaces whenever a plumbing, piping, or duct penetrates a floor-ceiling assembly or where such unit passes through the plane of the floor-ceiling assembly from within a wall. The insulation shall be installed to a point 12" beyond the pipe or duct. This requirement is not applicable to fire sprinkler pipe, gas line or electrical conduit.
6. Electrical outlet boxes in opposite faces of separation walls shall be separated horizontally by 24" and note that back and sides of boxes shall be sealed with 1/8" resilient sealant and backed by a minimum of 2" thick mineral fiber insulation.
7. In fire-rated walls, the surface area of individual electrical boxes shall not exceed 16 square inches. The aggregate surface area of the boxes shall not exceed 100 square inches in any 100 square feet.
8. Through penetrations are not permitted through fire-rated assemblies of Bldg B (townhouses) except for steel, ferrous or copper pipe or conduit with firestopping in accordance with ORSC R302.4.1.
9. For all other penetrations a penetration firestop system shall be provided in accordance with R302.4.1.2 as follows:
 "Penetrations shall be protected by an approved penetration firestop system installed as tested in accordance with ASTM E 814 or UL 1479, with a minimum positive pressure differential of 0.01 inch of water (3 Pa) and shall have an F rating of not less than the required fire-resistance rating of the wall or floor/ceiling assembly penetrated."
 Refer to USG "Fire Stop Systems" brochure (SA 727) for required fire-stopping at particular penetrations.
10. Membrane penetrations in townhouse structures (Bldg B) shall be in accordance with R302.4.2.



life safety plan
1/8" = 1'-0"

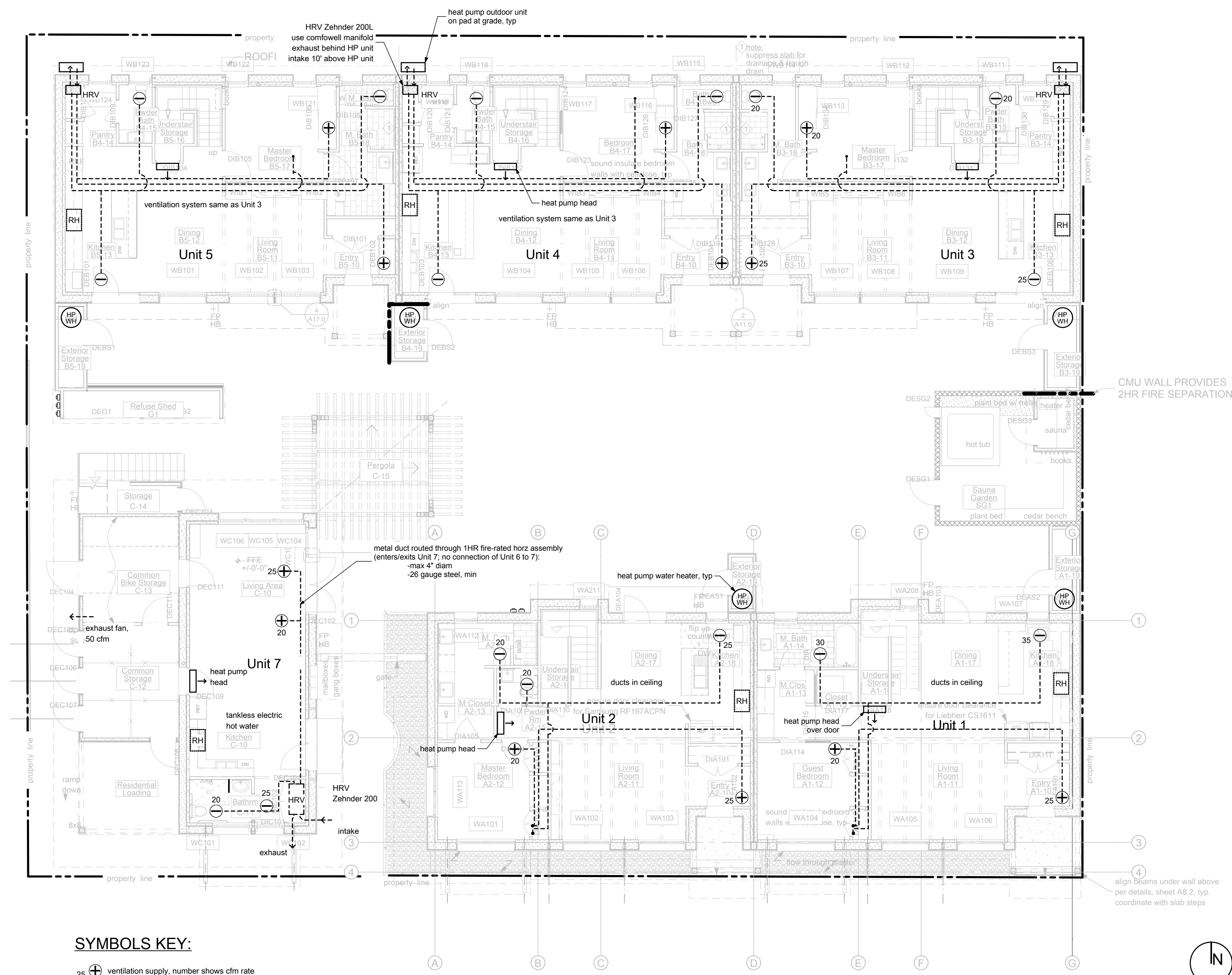
issue:	date:
permit set	06.20.13
revised	07.31.13

PERMIT SET
7/31/2013

location key

life safety plan

A0.2



SYMBOLS KEY:

- 25 ⊕ ventilation supply, number shows cfm rate
- 25 ⊖ ventilation exhaust, number shows cfm rate
- RH range hood, recirculating
- HRV heat-recovery ventilation unit

main level mechanical systems 1
1/8" = 1'-0"

VENTILATION SYSTEM SPECIFICATIONS

Unit	Bldg	Ventilation System	Control	Standard cfm	Total Flow Boost cfm	Average ACH
1	A	Zehnder Comfoair 200 HRV	Continuous, manual boost	85	110	0.45
2	A	same as above		57%	73%	% output
3	B	Zehnder Comfoair 200 HRV	Continuous, manual boost	85	110	0.48
4	B	same as above		57%	73%	% output
5	B	same as above				
6	C	Zehnder Comfoair 200 HRV	Continuous, manual boost	45	90	0.52
7	C	Zehnder Comfoair 200 HRV	Continuous, manual boost	45	145	0.52
Storage	C	Panasonic Exhaust Fan	Switched with light	50		0.06cfm/sf

NOTES:

- Minisplit heat pumps shall have min. 10 HSPF efficiency (ave seasonal COP = 2.93). Install on wall-mounted bracket with weather-proof vibration isolation pads.
- Heat pump water heaters: AirTap Hybrid, 66 gal. Source air from storage unit. Provide grille in storage room door for air intake. Duct exhaust to exterior through storage room walls. Provide supplementary insulation jacket around tank (i.e. frostking 3" fiberglass-faced fiberglass). Provide double insulation around water lines to/from house.
- Range hoods shall be recirculating type with charcoal grease filters. Provide (2) extra grease filters to owners.

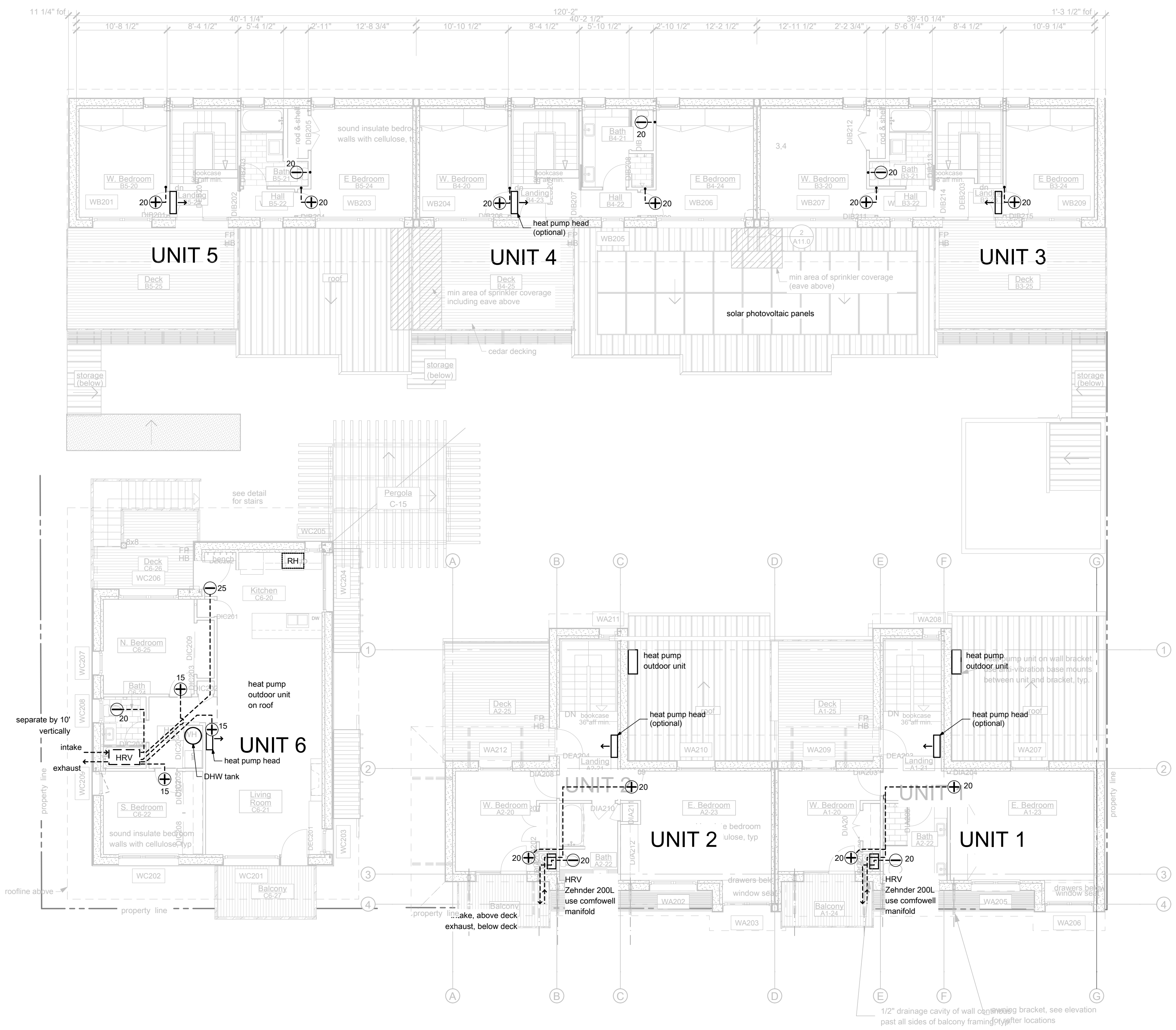
issue:	date:
permit set	06.20.13
revised	07.31.13

PERMIT SET
7/31/2013

location key

mechanical plans

M1.0



SYMBOLS KEY:

25 ⊕ ventilation supply, number shows cfm rate
 25 ⊖ ventilation exhaust, number shows cfm rate
 RH range hood, recirculating

upper level mechanical systems 1
 1/8" = 1'-0"

issue:	date:
permit set	06.20.13
revised	07.31.13

PERMIT SET
 7/31/2013

location key

mechanical plans

M1.1